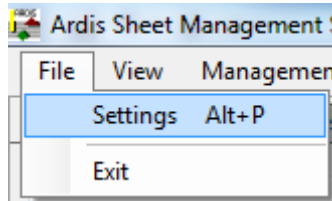


## Double Barcode Scanner Configuration

The list of configuration barcodes on the following page will easily set up your 2 barcode readers for you. Select your choices carefully before scanning the barcodes. When you have finished the 7 steps, continue reading below.

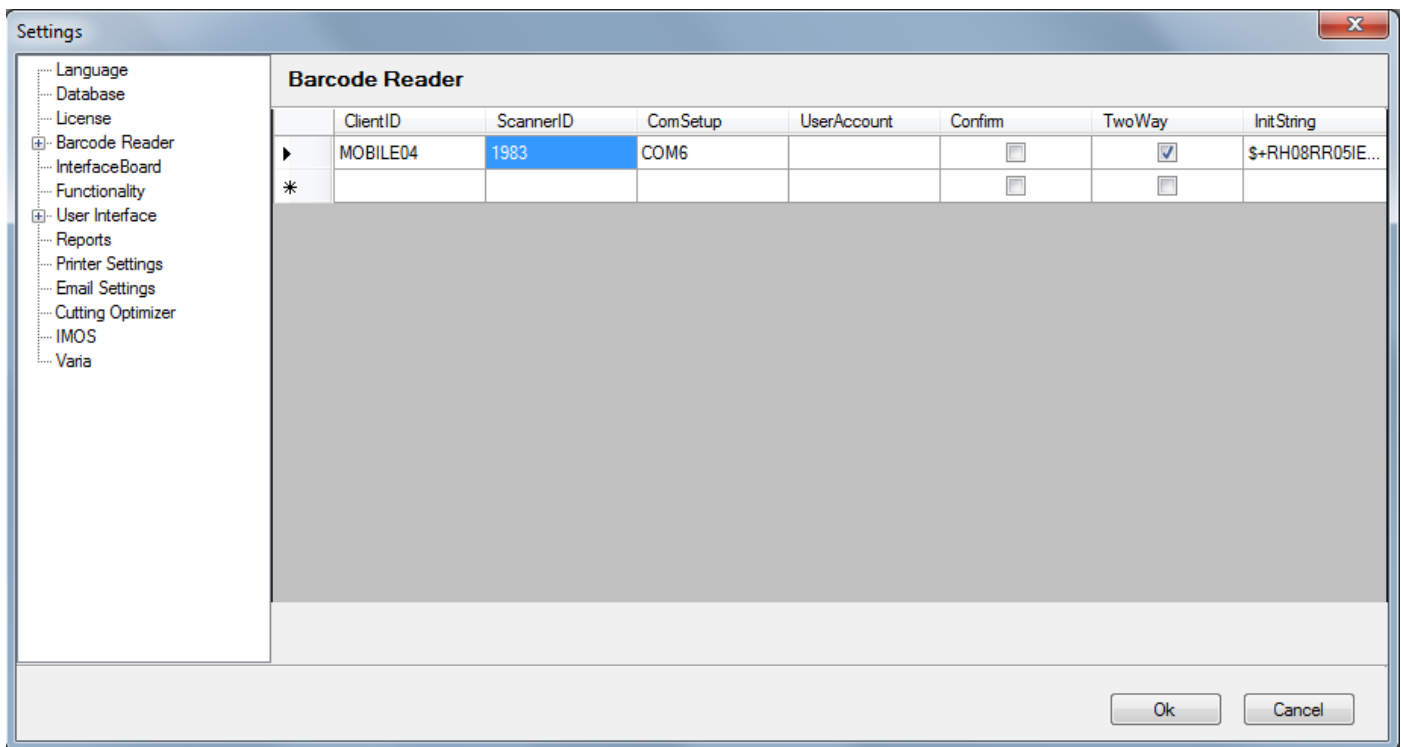
### 1. ASMS configuration

Your barcode reader is now linked to its cradle and to the computer. Now open ASMS and go to Settings.



Go to the tab "Barcode Reader" and fill in the following.

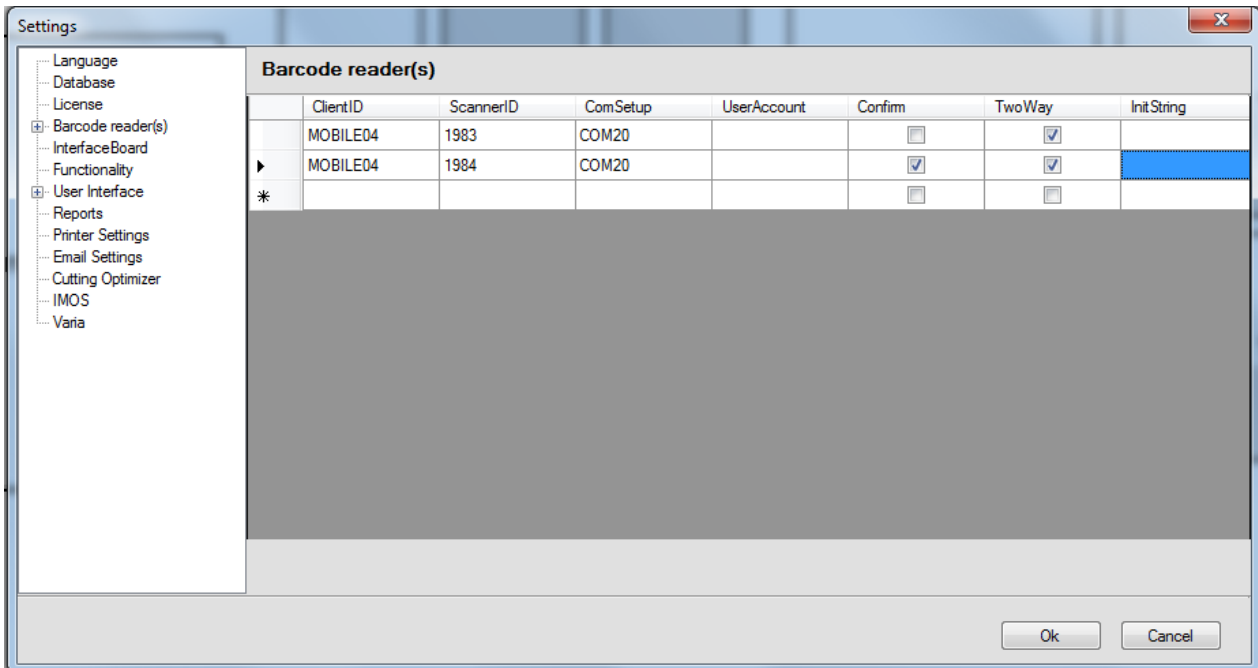
- CLIENTID (automatically filled in): Computer Name
- SCANNER ID: Fill in "1983"<sup>1</sup>
- ComSetup: Select the COM-Port where the scanner is connected to
- For other options, see the User Guide.



<sup>1</sup> In collaboration with the university of Ghent in 1983 our managing director Arnout De Lille started to explore ways of how to optimize the cutting of rectangular shapes for industrial purposes.

Go to the second line and fill in the following.

- CLIENTID (automatically filled in): Computer Name
- SCANNER ID: Fill in "1984"
- ComSetup: Select the COM-Port where the scanner is connected to
- For other options, see the User Guide.
- Check Two-Way & Confirm (this is for the numerical scanner)



On the barcode configuration barcodes, both barcode scanners will be referred to like this:

- Numerical scanner DK
- Normal Scanner: D
- Both: B

